

Waste sorting guide

For tenant committee



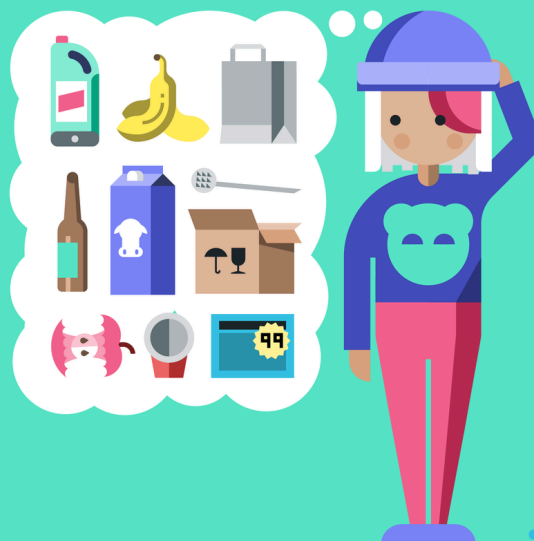
Waste sorting at Hoas

There are seven types of waste collection bins at Hoas properties:

- Mixed waste
- Biowaste
- Plastic packaging
- Glass
- Metal
- Paper
- Cardboard
- On this page, you'll find checklists showing which type of waste belongs in each bin.

Not every waste room has all types of collection bins. In such cases, the correct bin can be found at another waste collection point on the property. You can check the locations of your property's waste points using the property map service, which you can access via MyHoas.

This info package covers checklists for what waste needs to be sorted in what bin.



Why is waste sorting worthwhile?

1. To recover valuable materials from waste

For example, glass and metal can be recycled almost indefinitely and used to make new glass and metal products. Waste that ends up in mixed waste is incinerated, destroying even valuable materials, making them unusable. In that case, more new raw materials must be extracted from nature – and natural resources are not unlimited.

2. Waste management for sorted waste is cheaper.

Waste management costs money – and the most expensive type of waste is mixed waste. If a property practices diligent sorting, its waste management fees will also decrease. Waste management fees are part of a property's expenses and affect the rent charged for a rental apartment. Sorting is therefore an easy way to do your part to help keep rental costs reasonable.

Did you know? If there is incorrect waste in a collection bin for sorted waste, the entire contents of the bin are immediately treated as mixed waste.

So, if you don't want to sort your waste, the smartest thing to do is to put all your waste in the mixed waste bin!



Mixed waste



- Hygiene products (e.g. diapers, cotton swabs, menstrual products)
- Plastic items not suitable for plastic recycling (e.g. foam plastic, dirty food packaging)
- Broken clothes and accessories, moldy textiles
- Leather, faux leather, rubber (bags, boots)
- Padded textiles (duvets, pillows, stuffed toys)
- Small rugs
- Glassware, porcelain, and ceramics (drinking glasses, other dishes, decorative items, mirrors)
- Cat litter
- Incandescent and halogen light bulbs, fuses
- Vacuum cleaner bags
- Cooled ash and cigarette butts



- Recyclable materials with their own collection
- Hazardous waste (medications, toxic chemicals, batteries)
- Electrical appliances
- Large metal items
- Large amounts of non-combustible waste/items (to Sortti stations)



Mixed waste is transported to the Vantaa Energy waste-to-energy plant. The waste is emptied for incineration without sorting. The combustion energy generated from burning is recovered, and the flue gases are purified. The recovered energy is used for district heating and electricity. Non-combustible materials result in ash and slag, which, after pre-treatment, are utilized in applications such as earthworks. **Biowaste** mixed with general waste makes it harder to burn, which reduces the amount of energy that can be recovered.

Biowaste



- Fruit and vegetable peels
- Food scraps, solidified fats
- Fish bones, other bones
- Egg cartons
- Coffee grounds, tea leaves, tea bags, and filter papers
- Paper towels, napkins, tissues
- Wilted flowers
- Wood-based pet litter (shavings and pellets)



- Plastic bags
- Food packaging

Do this

- Line the biowaste bin with a paper biowaste bag (e.g. a flour or cereal box)
- You can also use a bag made of biodegradable plastic from the store
- Let biowaste cool down and dry slightly before putting it in the bag
- Pour out any liquids into the drain
- Empty the biowaste every few days
- Tip! An egg carton at the bottom of the bag helps absorb moisture.



Sorted biowaste allows nutrients to be recovered and used in renewable energy production. The end products include, for example, biogas and nutrient-rich compost soil.

Plastic packaging



- Empty plastic food packaging (e.g. yogurt containers, butter tubs, deli packaging)
- Plastic retail packaging for household items
- Plastic bags, pouches, and wrappers
- Empty plastic bottles for detergents, shampoo, and soap
- Empty plastic bottles and jars



- Packaging that contains residues of hazardous substances (e.g. liquid medicine packaging – put in mixed waste)
- Non-packaging plastic (e.g. kitchen utensils, toys, freezer boxes, wash basins)

Do this

- Rinse or wipe the empty package if needed. It's enough that the package doesn't cause odor or mold problems.
- Remove caps and lids (this makes further processing easier)
- Do not nest packages inside one another (this makes further processing easier)
- Take the waste to the collection point in a plastic bag



Plastic packaging is processed into raw material for new plastic products at a plastic refinery. The waste is sorted by type, which is why it's important that different plastics are not nested or attached to each other (e.g. caps and lids), to maintain the quality of the recycled plastic.

The plastic is washed and shredded. It is then used to produce, among other things, plastic pellets for the plastics industry. These recycled plastic pellets are used to manufacture items such as plastic bags, flower pots, and dish brushes.

Cardboard and carton



- Milk and juice cartons (including those with plastic or aluminum lining and caps)
- Cardboard packaging, e.g. cereal and biscuit boxes
- Paper bags, e.g. for bread or flour
- Paper shopping bags
- Wrapping paper (excluding printed gift wrap)
- Egg cartons
- Toilet and kitchen paper rolls



- Dirty packaging
- Gift wrap and craft cardboard
- Styrofoam
- Plastic packaging

Do this

- Remove food leftovers. Wipe off any residue with paper or rinse the packaging with cold water.
- Let it dry. The packaging is clean and dry enough if it can be stored at home for a few days without causing odor or mold. Mold ruins the packaging and makes the material unusable.
- You do not need to remove attached caps, staples, or packing tape.
- Flatten packages and nest them together to save space in the waste bin.



Cardboard packaging is sent to cardboard mills, where the fibers are separated from coatings. The fibers in the packaging are separated from one another and from the coating materials. The separated coating (usually plastic) is utilized as heat and energy at a power plant. The recovered cardboard fiber is used for products such as corrugated board, envelopes, laminate paper, or paper cores. Some of it becomes raw material for new cardboard packaging.

Paper



- Newspapers
- Advertisements and brochures
- Envelopes (including those with windows)
- Phone books and product catalogs
- Postcards
- Copy paper and printouts
- White drawing and notepad paper



- Wet or dirty paper
- Books
- Cardboard or carton
- Brown paper or paper bags
- Receipts
- Aluminum and wax papers
- Heavily dyed paper, e.g. gift wrap

Do this

- All paper that comes through the mail slot, as well as writing and printing paper, is good to go to paper collection.
- The material must be clean and dry.
- Staples and paper clips do not need to be removed.



Collected paper is delivered to a paper mill, where it is used to produce new paper. This recycled paper is used, for example, for newspapers. Producing recycled paper saves energy and natural resources, and generates fewer emissions compared to producing completely new paper.

Metal



- Tin cans
- Aluminum trays and foil
- Metal lids and caps
- Metal cups from tealight candles
- Empty aerosol cans (e.g. hairspray)
- Small metal items that fit into the collection bin



- Plastic or coffee bags (e.g. chip bags – put in plastic recycling)
- Batteries and accumulators – to hazardous waste collection
- Full or partially full aerosol cans – to hazardous waste collection
- Electrical appliances
- Large metal scrap (e.g. bicycles, metal devices)

Do this

- Rinse metal waste with cold water to remove any residue
- Bring it to the recycling point in a container and pour the metal items into the collection bin
- Return deposit cans to the store or Alko for refund

Metal can be recycled almost endlessly.



Metal waste is crushed and cleaned, and other materials are removed from the metal. The metals are sorted based on properties such as magnetism, density, and electrical conductivity. The recycled metal is delivered to the metal industry for use in manufacturing new metal products.

Glass



- Glass bottles
- Glass jars



- Glassware
- Heat-resistant glass (e.g. oven dishes, coffee pots)
- Crystal, porcelain, and ceramics
- Window or mirror glass
- Light bulbs

Do this

- Rinse glass waste with cold water
- Remove caps and lids
- Labels, collar rings, and other fixed parts can be left on
- Return deposit bottles to the store or Alko

Glass can be recycled indefinitely without losing its quality or purity.



Recycled glass is crushed and washed. The glass cullet is sorted by color and size, and then delivered to glass factories to be used in the production of new glass packaging and construction products (such as foam glass).

Other waste

Collecting all seven types of waste is already a great achievement, but even at Hoas properties, not everything recyclable is collected. Fortunately, most of these items are ones that accumulate rather rarely, and many collection points can be found near your everyday routes.

HSY Waste Guide – Type the name of the waste item, and the guide will tell you what type of waste it is and where you can deliver it: [Waste guide](#)

Locations of collection points: kierratys.info

Sortti

- Broken furniture and large items, paid
- Hazardous household waste (e.g. aerosol cans, paints, batteries), free of charge
- Electrical appliances and waste (WEEE collection point), free of charge

Grocery stores and shopping centers

- Small electrical appliances
- Batteries

End-of-life textile collection points (HSY)

- Clothes and household textiles (clean and dry)
- Pack textiles tightly in plastic bags

Pharmacy

- Medicines, needles and syringes

Library

- Confidential paper
- Paper shredders and containers for confidential documents are available at libraries in the Helsinki metropolitan area

How to organize sorting at home

Sorting seven types of waste might seem difficult to fit into a smaller apartment, but it's definitely possible! Here are some of our tried and tested ways to arrange collection bins at home.

Mixed waste	Bin in the kitchen cabinet. Once everything else is sorted, a small bin is enough for mixed waste.
Biowaste	Bin in the kitchen cabinet. Use a paper bag with shredded newspaper or an egg carton at the bottom to absorb moisture. Note: Never use a plastic bag for biowaste.
Plastic packaging	Bin in the waste cabinet or a separate lidded bin in the kitchen.
Paper	A decorative basket in the living room.
Cardboard	A paper bag hanging in the hallway. Flatten and nest cardboard pieces tightly inside each other.
Metal	A small box (e.g. a shoebox) placed in a kitchen cupboard or drawer.
Glass	A reusable bag in the cleaning cabinet.

Less waste

The best option is to avoid generating waste in the first place. Here are a few simple ways to reduce waste:

Avoid disposable products and unnecessary packaging

- Carry your shopping home in a fabric or reusable bag
- Pack all fruits and vegetables into the same bag at the store
- Use disposable items multiple times

Maintain, repair and reuse

- Repair or service broken items
- Find a new use for an old item

Sell or donate

- One person's trash is another person's treasure! Donations are accepted by, for example, Kierrätyskeskus, SPR Kontti, and Fida.
- You can even make a small profit by selling used items. Platforms include tori.fi, Facebook Marketplace, and flea markets.

Borrow instead of buying

- Check if you could borrow what you need.
- You might get a drill from a relative or find a carpet cleaner from a friend.
- At the library, you can print and copy for a small fee.

Recycle everything you can

- This way, new materials can be used to manufacture new products.
- If the item cannot be recycled, sort it into mixed waste.
- Mixed waste is incinerated, and valuable recyclable materials go to waste. So don't accidentally throw anything into the flames that could still be used as material.